

# TELPAD II

## 4G LTE INTERCOM SPECIFICATION

### FEATURES AND BENEFITS



Dimensions: H 166 x W 89 x D 40 (mm)

- 316 marine grade stainless steel faceplate. Optional anthracite finish
- Low profile, high strength, sealed back box for greater performance and durability
- LED downlight
- Surface mounted
- IP64 rated keypad
- Timed 'Trade' button
- Backlit, vandal resistant keypad with 7 programmable colours
- 400 PIN codes
- 900 Authorised dial to open numbers
- Time clock with 9 profiles
- Event SMS alerts
- Aux triggered SMS alerts
- Downloadable activity log

### TECHNICAL SPECIFICATION

■ **PROGRAMMING:** Remotely programmable via App, SMS or via software. Any codes programmed via the app will be applied to both the Telpad and the panel it's connected to:

**OPTIMUS** The Telpad II will mirror the programming of the Optimus panel it is connected to.

**TELGUARD ~ ML OR HY-CAN RANGE** The Telpad II can either mirror the programming of the chosen panel or have separate codes.

**STANDALONE ~ HUB CONNECTION** Programming allowance as the Telguard range:

- 400 Access Codes
- 900+ Authorised incoming numbers
- Internal Time Clock with 9 time zones
- Activity Log
- SMS Alerts

■ **RELAYS:** Dependant upon unit the Telpad is connected to. No relays included with the Telpad II.

■ **RECOMMENDATION:** Use 8 Core CAT 5 cable:

- Twisted pair Power (0V/12V)
- Twisted pair CAN (HI/LO)



#### EASY TO USE

- The Telpad II can be used as an entry or exit keypad; simply enter your pre-programmed entry code!



#### EASY TO INSTALL

- Minimal cabling:
  - Simply connect to an existing Telguard or Optimus unit, Alert Guard or Hub via 4 cores.



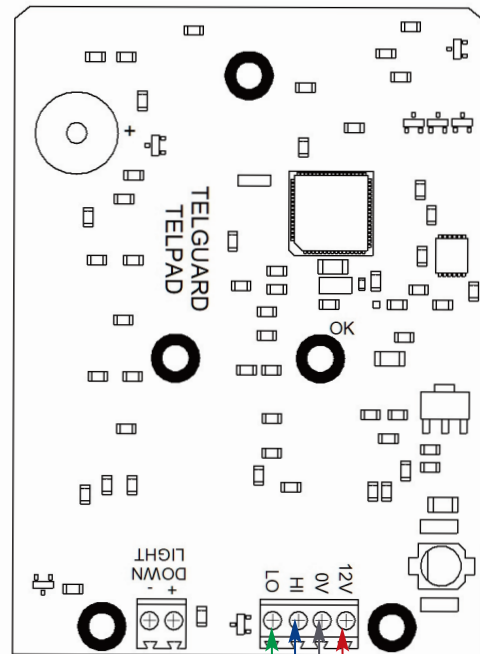
#### TWO YEAR WARRANTY

- Parts only.
- Programming support via connected Telguard intercom.



#### CONFIGURATION

- Must be connected to a Telguard or Optimus intercoms. The Telpad II can either:
  - Absorb the existing codes of the panel it's connected to (*the only option for Optimus*).
  - Be programmed with separate codes to differentiate between exit and entry (*Telguard range only*).
  - The Telpad II connects via 4 cores. These connections are identical across our entire range of Telguard products.



LO to LO | 12V to 12V  
HI to HI | 0V to 0V



Raising Standards  
Advancing Safety



EU CE Declaration of Conformity and Radio Equipment Directive is available at [www.commtel.io](http://www.commtel.io) | GB-RH10 9RB